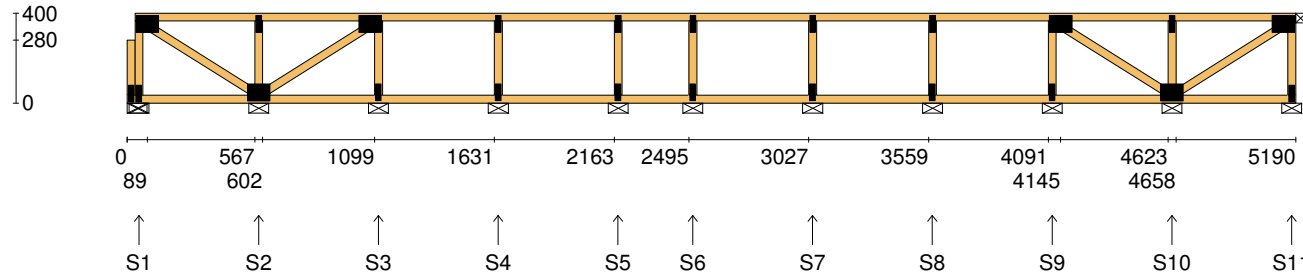


Client: D'ANDREA	Trusstech SA Pty Ltd 16 High St., Dry Creek, SA 5094 Joist Name: FT1 Type: SJ 400 Ladder Joists: FT1	Job No: TT09731
Site: 541 ANZAC HWY GLENELG EAST SA 5045 AUS		Weight: 27.37 kg
Ref: DWELLING 5		Total Weight: 27.37 kg
		Laminations: 1



TIMBER / PLATES


Member	Size	Plating	Restraint
BC1	90x35-MGP10 H0 ADS	JD5	600
LBlock1	90x35-MGP10 H0 ADS	JD5	
LEW1	90x35-MGP10 H0 ADS	JD5	
TC1	90x35-MGP10 H0 ADS	JD5	300
W1	90x35-MGP10 H0 ADS	JD5	
W2	90x35-MGP10 H0 ADS	JD5	
W3	90x35-MGP10 H0 ADS	JD5	
W4	90x35-MGP10 H0 ADS	JD5	
W5	90x35-MGP10 H0 ADS	JD5	
W6	90x35-MGP10 H0 ADS	JD5	
W7	90x35-MGP10 H0 ADS	JD5	
W8	90x35-MGP10 H0 ADS	JD5	
W9	90x35-MGP10 H0 ADS	JD5	

- 5 more members were not shown -

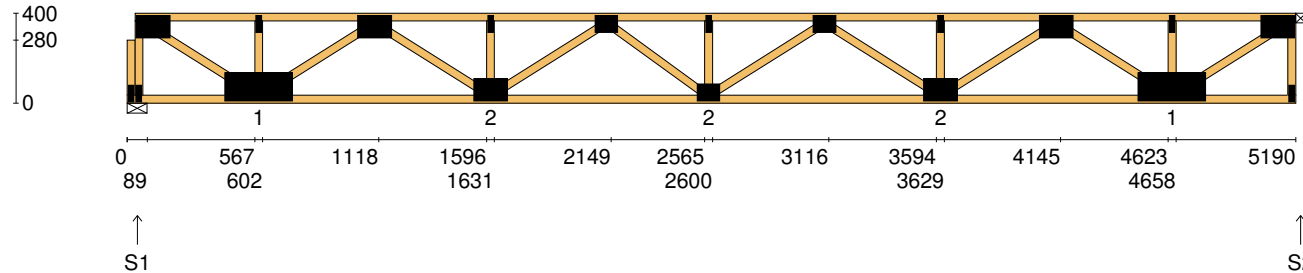
Vertical Reactions at Supports

	S1	S2	S3	S4	S5	S6	S7	S8	S9	S10	S11
1.35DL (kN)	0.07	0.22	0.15	0.17	0.13	0.13	0.17	0.16	0.16	0.22	0.07
1.2DL + 1.5LL (kN)	0.30	1.11	0.76	0.91	0.67	0.68	0.90	0.86	0.77	1.11	0.30

Joint	Nail Plate	Joint	Nail Plate
BL1-1	25x75-MN	T7	25x75-MN
T1	75x100-MN	B6	25x75-MN
BL1	25x75-MN	T8	25x75-MN
B1	75x100-MN	B7	25x75-MN
T2	25x75-MN	T9	75x100-MN
T3	75x100-MN	B8	25x75-MN
B2	25x75-MN	B9	75x100-MN
T4	25x75-MN	T10	25x75-MN
B3	25x75-MN	BR1	25x75-MN
T5	25x75-MN	T11	75x100-MN
B4	25x75-MN		
T6	25x75-MN		
B5	25x75-MN		

Span: 5190	Floor Material: Particle (15.4 kg/m²)	Application: General Areas	All dimensions in millimetres. This drawing should be read in conjunction with Multinail Technical sheets. Wall plates must be placed at supports only.	Marc Houldsworth (TN-016-020)
Overhang: 0/0	Floor Covering: Std Carpet + Underlay (8 kg/m²)	Live Load: 1.5 kPa		Ver: Floor 1.9.3
Spacing: 600	Ceiling Material: Plaster 10mm Supa Span (8.2 kg/m²)	Point Load: 1.8 kN		Date: 28/05/2018
Quantity: 1	Ceiling Fixing: Metal direct @ 600c	Design: AS 1720.1-2010		Page: 1 of 24

Client: D'ANDREA	Trusstech SA Pty Ltd 16 High St., Dry Creek, SA 5094	Job No: TT09731
Site: 541 ANZAC HWY GLENELG EAST SA 5045 AUS		Weight: 32.71 kg
Ref: DWELLING 5	Joist Name: FT2 Type: SJ 400 Joists: FT2, FT3, FT4, FT5, FT6	Total Weight: 163.54 kg
		Laminations: 1



TIMBER / PLATES


Member	Size	Plating	Restraint
BC1	90x35-MGP10 H0 ADS	JD5	600
LBlock1	90x35-MGP10 H0 ADS	JD5	
LEW1	90x35-MGP10 H0 ADS	JD5	
TC1	90x35-MGP10 H0 ADS	JD5	300
W1	90x35-MGP10 H0 ADS	JD5	
W2	90x35-MGP10 H0 ADS	JD5	
W3	90x35-MGP10 H0 ADS	JD5	
W4	90x35-MGP10 H0 ADS	JD5	
W5	90x35-MGP10 H0 ADS	JD5	
W6	90x35-MGP10 H0 ADS	JD5	
W7	90x35-MGP10 H0 ADS	JD5	
W8	90x35-MGP10 H0 ADS	JD5	
W9	90x35-MGP10 H0 ADS	JD5	

- 7 more members were not shown -

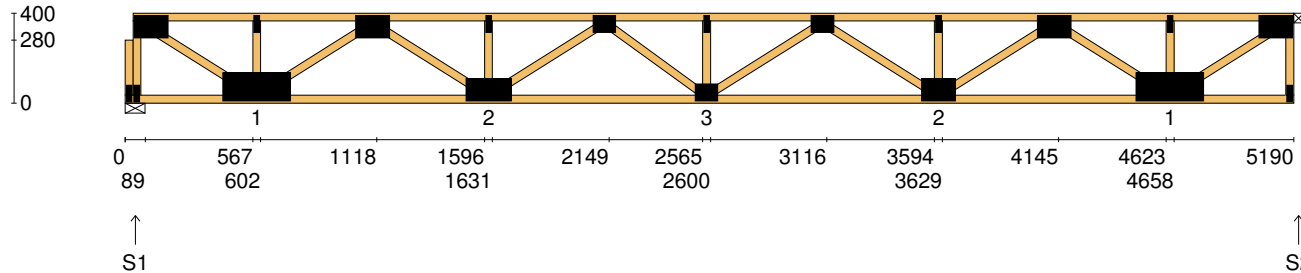
Vertical Reactions at Supports

	S1	S2
1.35DL (kN)	0.85	0.85
1.2DL + 1.5LL (kN)	4.21	4.21

Joint	Nail Plate	Joint	Nail Plate
BL1-1	25x75-MN	T8	25x75-MN
T1	100x150-MN	T9	100x150-MN
BL1	25x75-MN	B5	125x300-MN
B1	125x300-MN	T10	25x75-MN
T2	25x75-MN	BR1	25x75-MN
T3	100x150-MN	T11	100x150-MN
B2	100x150-MN		
T4	25x75-MN		
T5	75x100-MN		
B3	75x100-MN		
T6	25x75-MN		
T7	75x100-MN		
B4	100x150-MN		

Span: 5190	Floor Material: Particle (15.4 kg/m²)	Application: General Areas	All dimensions in millimetres. This drawing should be read in conjunction with Multinail Technical sheets. Wall plates must be placed at supports only.	Marc Houldsworth (TN-016-020)
Overhang: 0/0	Floor Covering: Std Carpet + Underlay (8 kg/m²)	Live Load: 1.5 kPa		Ver: Floor 1.9.3
Spacing: 600	Ceiling Material: Plaster 10mm Supa Span (8.2 kg/m²)	Point Load: 1.8 kN		Date: 28/05/2018
Quantity: 5	Ceiling Fixing: Metal direct @ 600c	Design: AS 1720.1-2010		Page: 2 of 24

Client: D'ANDREA	Trusstech SA Pty Ltd 16 High St., Dry Creek, SA 5094	Job No: TT09731
Site: 541 ANZAC HWY GLENELG EAST SA 5045 AUS		Weight: 32.79 kg
Ref: DWELLING 5	Joist Name: FT3 Type: SJ 400 Joists: FT7	Total Weight: 32.79 kg
		Laminations: 1



TIMBER / PLATES


Member	Size	Plating	Restraint
BC1	90x35-MGP10 H0 ADS	JD5	600
LBlock1	90x35-MGP10 H0 ADS	JD5	
LEW1	90x35-MGP10 H0 ADS	JD5	
TC1	90x35-MGP10 H0 ADS	JD5	300
W1	90x35-MGP10 H0 ADS	JD5	
W2	90x35-MGP10 H0 ADS	JD5	
W3	90x35-MGP10 H0 ADS	JD5	
W4	90x35-MGP10 H0 ADS	JD5	
W5	90x35-MGP10 H0 ADS	JD5	
W6	90x35-MGP10 H0 ADS	JD5	
W7	90x35-MGP10 H0 ADS	JD5	
W8	90x35-MGP10 H0 ADS	JD5	
W9	90x35-MGP10 H0 ADS	JD5	

- 7 more members were not shown -

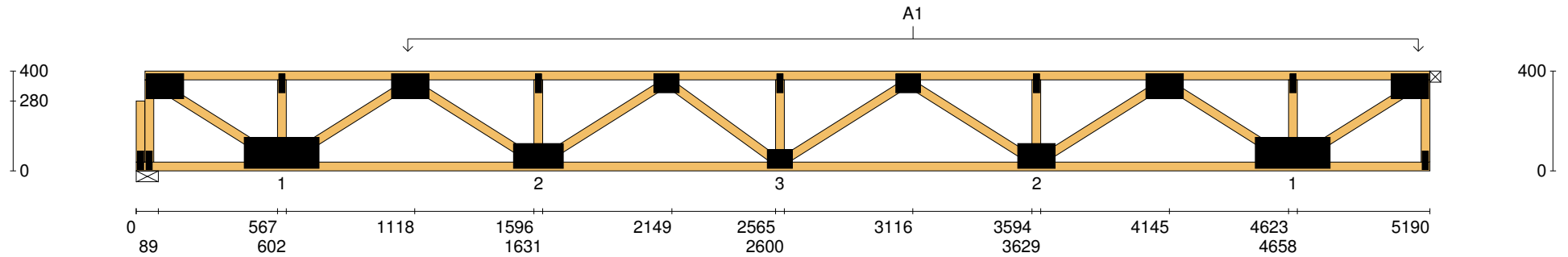
Vertical Reactions at Supports

	S1	S2
1.35DL (kN)	1.11	1.23
1.2DL + 1.5LL (kN)	4.44	4.55


Joint	Nail Plate	Joint	Nail Plate
BL1-1	25x75-MN	T8	25x75-MN
T1	100x150-MN	T9	100x150-MN
BL1	25x75-MN	B5	125x300-MN
B1	125x300-MN	T10	25x75-MN
T2	25x75-MN	BR1	25x75-MN
T3	100x150-MN	T11	100x150-MN
B2	100x200-MN		
T4	25x75-MN		
T5	75x100-MN		
B3	75x100-MN		
T6	25x75-MN		
T7	75x100-MN		
B4	100x150-MN		

Span: 5190	Floor Material: Particle (15.4 kg/m²)	Application: General Areas	All dimensions in millimetres. This drawing should be read in conjunction with Multinail Technical sheets. Wall plates must be placed at supports only.	Marc Houldsworth (TN-016-020)
Overhang: 0/0	Floor Covering: Std Carpet + Underlay (8 kg/m²)	Live Load: 1.5 kPa		Ver: Floor 1.9.3
Spacing: 600	Ceiling Material: Plaster 10mm Supa Span (8.2 kg/m²)	Point Load: 1.8 kN		Date: 28/05/2018
Quantity: 1	Ceiling Fixing: Metal direct @ 600c	Design: AS 1720.1-2010		Page: 3 of 24

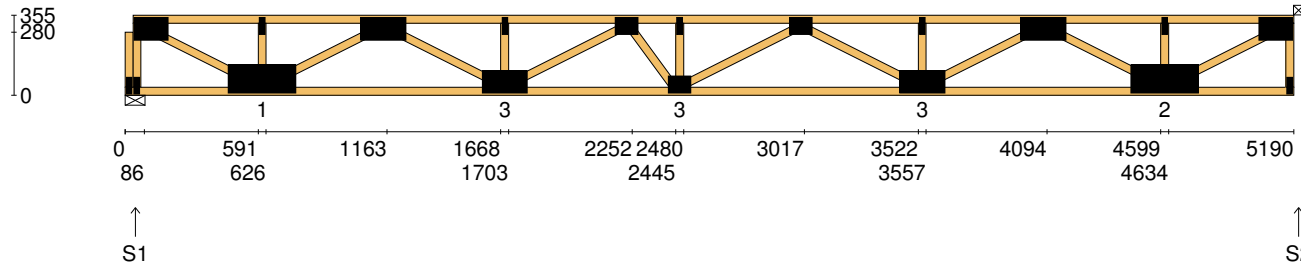
Client: D'ANDREA	Trusstech SA Pty Ltd 16 High St., Dry Creek, SA 5094	Job No: TT09731
Site: 541 ANZAC HWY GLENELG EAST SA 5045 AUS		Weight: 32.79 kg
Ref: DWELLING 5	Joist Name: FT3 Type: SJ 400 Joists: FT7	Total Weight: 32.79 kg
		Laminations: 1



User Def. Load	A1 43.50 kg/m ²
Applied Load	
DL (kN)	
LL (kN)	
WL Up (kN)	
WL Dn (kN)	

Span: 5190	Floor Material: Particle (15.4 kg/m²)	Application: General Areas	All dimensions in millimetres. This drawing should be read in conjunction with Multinail Technical sheets. Wall plates must be placed at supports only.	Marc Houldsworth (TN-016-020)
Overhang: 0/0	Floor Covering: Std Carpet + Underlay (8 kg/m²)	Live Load: 1.5 kPa		Ver: Floor 1.9.3
Spacing: 600	Ceiling Material: Plaster 10mm Supa Span (8.2 kg/m²)	Point Load: 1.8 kN		Date: 28/05/2018
Quantity: 1	Ceiling Fixing: Metal direct @ 600c	Design: AS 1720.1-2010		Page: 4 of 24

Client: D'ANDREA	Trusstech SA Pty Ltd 16 High St., Dry Creek, SA 5094	Job No: TT09731
Site: 541 ANZAC HWY GLENELG EAST SA 5045 AUS		Weight: 33.87 kg
Ref: DWELLING 5	Joist Name: FT4 Type: SJ 355 Joists: FT8, FT9	Total Weight: 67.74 kg
		Laminations: 1



TIMBER / PLATES


Member	Size	Plating	Restraint
BC1	90x35-HC H0 MAN	JD5	600
LBlock1	90x35-MGP10 H0 ADS	JD5	
LEW1	90x35-MGP10 H0 ADS	JD5	
TC1	90x35-MGP10 H0 ADS	JD5	300
W1	90x35-MGP10 H0 ADS	JD5	
W2	90x35-MGP10 H0 ADS	JD5	
W3	90x35-MGP10 H0 ADS	JD5	
W4	90x35-MGP10 H0 ADS	JD5	
W5	90x35-MGP10 H0 ADS	JD5	
W6	90x35-MGP10 H0 ADS	JD5	
W7	90x35-MGP10 H0 ADS	JD5	
W8	90x35-MGP10 H0 ADS	JD5	
W9	90x35-MGP10 H0 ADS	JD5	

- 7 more members were not shown -

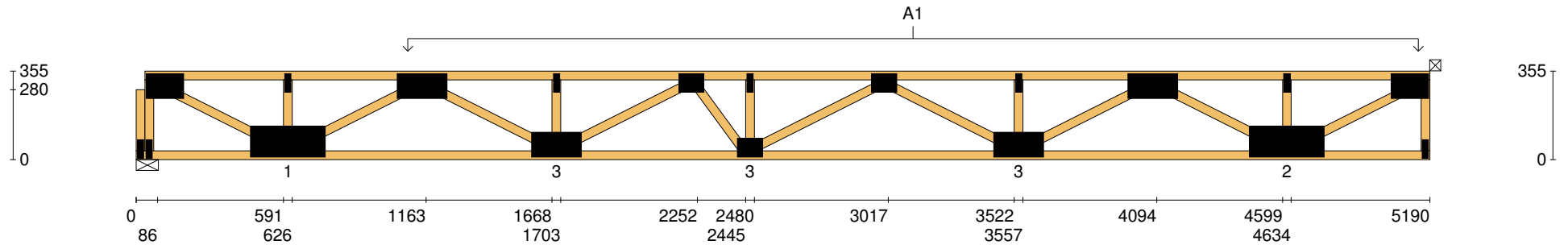
Vertical Reactions at Supports

	S1	S2
1.35DL (kN)	1.10	1.23
1.2DL + 1.5LL (kN)	4.44	4.55


Joint	Nail Plate	Joint	Nail Plate
BL1-1	25x75-MN	T8	25x75-MN
T1	100x150-MN	T9	100x200-MN
BL1	25x75-MN	B5	125x300-MN
B1	125x300-MN	T10	25x75-MN
T2	25x75-MN	BR1	25x75-MN
T3	100x200-MN	T11	100x150-MN
B2	100x200-MN		
T4	25x75-MN		
T5	75x100-MN		
B3	75x100-MN		
T6	25x75-MN		
T7	75x100-MN		
B4	100x200-MN		

Span: 5190	Floor Material: Particle (15.4 kg/m²)	Application: General Areas	All dimensions in millimetres. This drawing should be read in conjunction with Multinail Technical sheets. Wall plates must be placed at supports only.	Marc Houldsworth (TN-016-020)	
Overhang: 0/0	Floor Covering: Std Carpet + Underlay (8 kg/m²)	Live Load: 1.5 kPa		Ver:	Floor 1.9.3
Spacing: 600	Ceiling Material: Plaster 10mm Supa Span (8.2 kg/m²)	Point Load: 1.8 kN		Date:	28/05/2018
Quantity: 2	Ceiling Fixing: Metal direct @ 600c	Design: AS 1720.1-2010		Page:	5 of 24

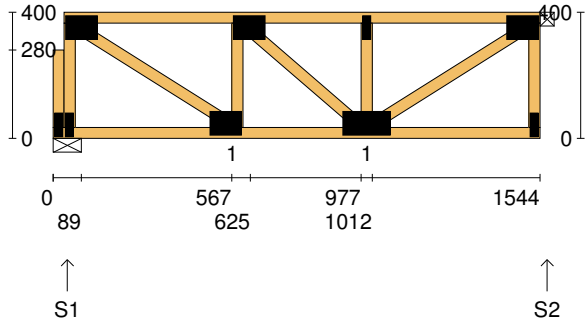
Client: D'ANDREA	Trusstech SA Pty Ltd 16 High St., Dry Creek, SA 5094	Job No: TT09731
Site: 541 ANZAC HWY GLENELG EAST SA 5045 AUS		Weight: 33.87 kg
Ref: DWELLING 5	Joist Name: FT4 Type: SJ 355 Joists: FT8, FT9	Total Weight: 67.74 kg
		Laminations: 1



User Def. Load	A1 43.50 kg/m ²
Applied Load	
DL (kN)	
LL (kN)	
WL Up (kN)	
WL Dn (kN)	

Span: 5190	Floor Material: Particle (15.4 kg/m²)	Application: General Areas	All dimensions in millimetres. This drawing should be read in conjunction with Multinail Technical sheets. Wall plates must be placed at supports only.	Marc Houldsworth (TN-016-020)
Overhang: 0/0	Floor Covering: Std Carpet + Underlay (8 kg/m²)	Live Load: 1.5 kPa		Ver: Floor 1.9.3
Spacing: 600	Ceiling Material: Plaster 10mm Supa Span (8.2 kg/m²)	Point Load: 1.8 kN		Date: 28/05/2018
Quantity: 2	Ceiling Fixing: Metal direct @ 600c	Design: AS 1720.1-2010		Page: 6 of 24

Client: D'ANDREA	Trusstech SA Pty Ltd 16 High St., Dry Creek, SA 5094	Job No: TT09731
Site: 541 ANZAC HWY GLENELG EAST SA 5045 AUS		Weight: 10.68 kg
Ref: DWELLING 5	Joist Name: FT5 Type: SJ 400 Joists: FT10, FT11, FT12	Total Weight: 32.04 kg
		Laminations: 1



TIMBER / PLATES


Member	Size	Plating	Restraint
BC1	90x35-MGP10 H0 ADS	JD5	600
LBlock1	90x35-MGP10 H0 ADS	JD5	
LEW1	90x35-MGP10 H0 ADS	JD5	
TC1	90x35-MGP10 H0 ADS	JD5	300
W1	90x35-MGP10 H0 ADS	JD5	
W2	90x35-MGP10 H0 ADS	JD5	
W3	90x35-MGP10 H0 ADS	JD5	
W4	90x35-MGP10 H0 ADS	JD5	
W5	90x35-MGP10 H0 ADS	JD5	
REW1	90x35-MGP10 H0 ADS	JD5	

Vertical Reactions at Supports

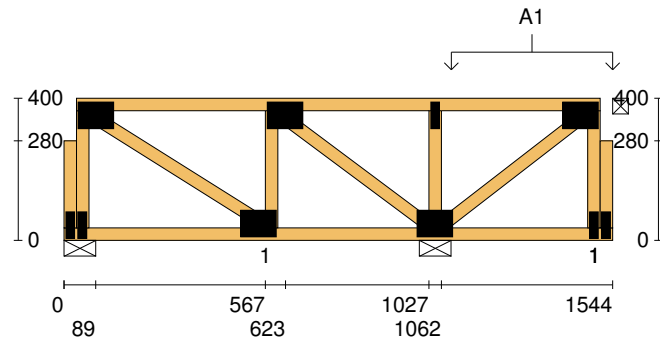
	S1	S2
1.35DL (kN)	0.26	0.25
1.2DL + 1.5LL (kN)	1.22	1.22

Joint Nail Plate


BL1-1	25x75-MN
T1	75x100-MN
BL1	25x75-MN
B1	75x100-MN
T2	75x100-MN
B2	75x150-MN
T3	25x75-MN
BR1	25x75-MN
T4	75x100-MN

Span: 1544	Floor Material: Particle (15.4 kg/m²)	Application: General Areas	All dimensions in millimetres. This drawing should be read in conjunction with Multinail Technical sheets. Wall plates must be placed at supports only.	Marc Houldsworth (TN-016-020)	
Overhang: 0/0	Floor Covering: Std Carpet + Underlay (8 kg/m²)	Live Load: 1.5 kPa		Ver:	Floor 1.9.3
Spacing: 600	Ceiling Material: Plaster 10mm Supa Span (8.2 kg/m²)	Point Load: 1.8 kN		Date:	28/05/2018
Quantity: 3	Ceiling Fixing: Metal direct @ 600c	Design: AS 1720.1-2010		Page:	7 of 24

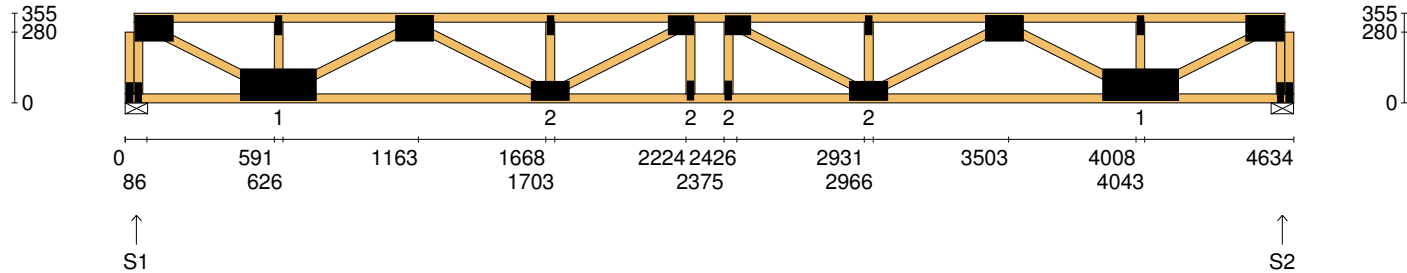
Client: D'ANDREA	Trusstech SA Pty Ltd 16 High St., Dry Creek, SA 5094	Job No: TT09731
Site: 541 ANZAC HWY GLENELG EAST SA 5045 AUS		Weight: 10.94 kg
Ref: DWELLING 5	Joist Name: FT6 Type: SJ 400 Joists: FT13	Total Weight: 10.94 kg
		Laminations: 1



User Def. Load	A1 43.50 kg/m ²
Applied Load	
DL (kN)	
LL (kN)	
WL Up (kN)	
WL Dn (kN)	

Span: 1544	Floor Material: Particle (15.4 kg/m²)	Application: General Areas	All dimensions in millimetres. This drawing should be read in conjunction with Multinail Technical sheets. Wall plates must be placed at supports only.	Marc Houldsworth (TN-016-020)
Overhang: 0/0	Floor Covering: Std Carpet + Underlay (8 kg/m²)	Live Load: 1.5 kPa		Ver: Floor 1.9.3
Spacing: 600	Ceiling Material: Plaster 10mm Supa Span (8.2 kg/m²)	Point Load: 1.8 kN		Date: 28/05/2018
Quantity: 1	Ceiling Fixing: Metal direct @ 600c	Design: AS 1720.1-2010		Page: 9 of 24

Client: D'ANDREA	Trusstech SA Pty Ltd 16 High St., Dry Creek, SA 5094	Job No: TT09731
Site: 541 ANZAC HWY GLENELG EAST SA 5045 AUS		Weight: 29.35 kg
Ref: DWELLING 5	Joist Name: FT7 Type: SJ 355 Joists: FT14	Total Weight: 29.35 kg
		Laminations: 1



TIMBER / PLATES


Member	Size	Plating	Restraint
BC1	90x35-MGP10 H0 ADS	JD5	600
LBlock1	90x35-MGP10 H0 ADS	JD5	
LEW1	90x35-MGP10 H0 ADS	JD5	
TC1	90x35-MGP10 H0 ADS	JD5	300
W1	90x35-MGP10 H0 ADS	JD5	
W2	90x35-MGP10 H0 ADS	JD5	
W3	90x35-MGP10 H0 ADS	JD5	
W4	90x35-MGP10 H0 ADS	JD5	
W5	90x35-MGP10 H0 ADS	JD5	
W6	90x35-MGP10 H0 ADS	JD5	
W7	90x35-MGP10 H0 ADS	JD5	
W8	90x35-MGP10 H0 ADS	JD5	
W9	90x35-MGP10 H0 ADS	JD5	

- 7 more members were not shown -

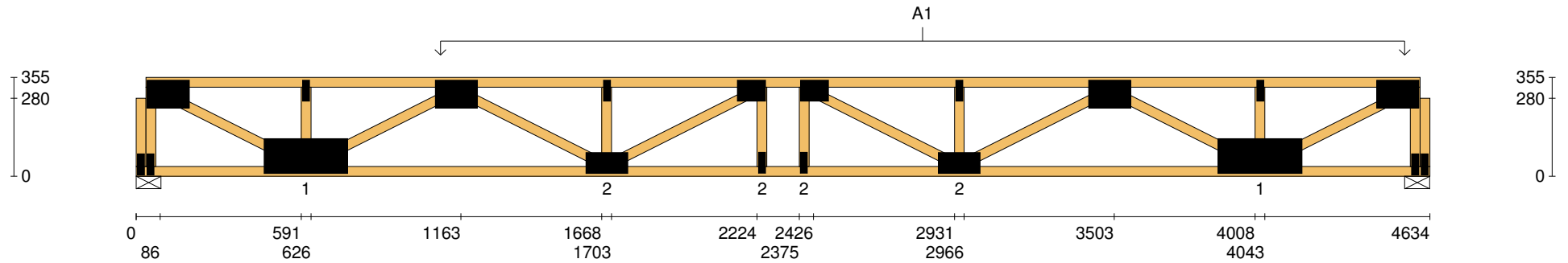
Vertical Reactions at Supports

	S1	S2
1.35DL (kN)	0.97	1.09
1.2DL + 1.5LL (kN)	3.92	4.02


Joint	Nail Plate	Joint	Nail Plate
BL1-1	25x75-MN	T7	25x75-MN
T1	100x150-MN	T8	100x150-MN
BL1	25x75-MN	B6	125x300-MN
B1	125x300-MN	T9	25x75-MN
T2	25x75-MN	BR1	25x75-MN
T3	100x150-MN	T10	100x150-MN
B2	75x150-MN	BR1-1	25x75-MN
T4	25x75-MN		
T5	75x100-MN		
B3	25x75-MN		
T6	75x100-MN		
B4	25x75-MN		
B5	75x150-MN		

Span: 4634	Floor Material: Particle (15.4 kg/m²)	Application: General Areas	All dimensions in millimetres. This drawing should be read in conjunction with Multinail Technical sheets. Wall plates must be placed at supports only.	Marc Houldsworth (TN-016-020)	
Overhang: 0/0	Floor Covering: Std Carpet + Underlay (8 kg/m²)	Live Load: 1.5 kPa		Ver: Floor 1.9.3	
Spacing: 600	Ceiling Material: Plaster 10mm Supa Span (8.2 kg/m²)	Point Load: 1.8 kN		Date: 28/05/2018	
Quantity: 1	Ceiling Fixing: Metal direct @ 600c	Design: AS 1720.1-2010		Page: 10 of 24	

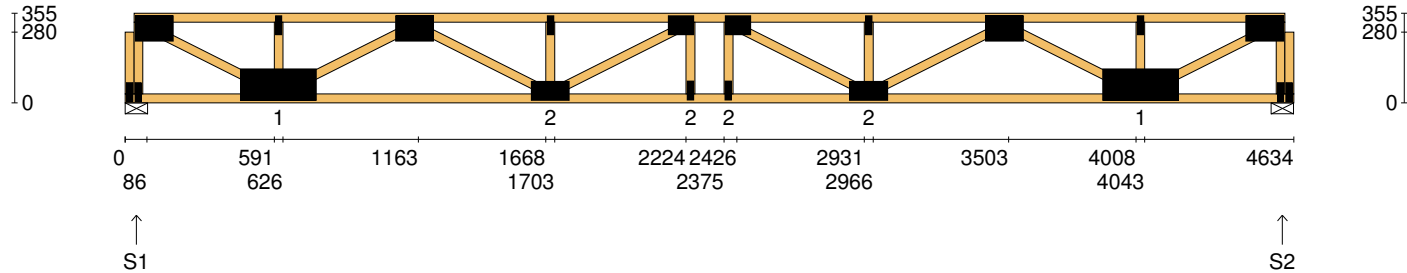
Client: D'ANDREA	Trusstech SA Pty Ltd 16 High St., Dry Creek, SA 5094	Job No: TT09731
Site: 541 ANZAC HWY GLENELG EAST SA 5045 AUS		Weight: 29.35 kg
Ref: DWELLING 5	Joist Name: FT7 Type: SJ 355 Joists: FT14	Total Weight: 29.35 kg
		Laminations: 1



User Def. Load	A1 43.50 kg/m ²
Applied Load	
DL (kN)	
LL (kN)	
WL Up (kN)	
WL Dn (kN)	

Span: 4634	Floor Material: Particle (15.4 kg/m²)	Application: General Areas	All dimensions in millimetres. This drawing should be read in conjunction with Multinail Technical sheets. Wall plates must be placed at supports only.	Marc Houldsworth (TN-016-020)
Overhang: 0/0	Floor Covering: Std Carpet + Underlay (8 kg/m²)	Live Load: 1.5 kPa		Ver: Floor 1.9.3
Spacing: 600	Ceiling Material: Plaster 10mm Supa Span (8.2 kg/m²)	Point Load: 1.8 kN		Date: 28/05/2018
Quantity: 1	Ceiling Fixing: Metal direct @ 600c	Design: AS 1720.1-2010		Page: 11 of 24

Client: D'ANDREA	Trusstech SA Pty Ltd 16 High St., Dry Creek, SA 5094	Job No: TT09731
Site: 541 ANZAC HWY GLENELG EAST SA 5045 AUS		Weight: 29.35 kg
Ref: DWELLING 5	Joist Name: FT8 Type: SJ 355 Joists: FT15	Total Weight: 29.35 kg
		Laminations: 1



TIMBER / PLATES


Member	Size	Plating	Restraint
BC1	90x35-MGP10 H0 ADS	JD5	600
LBlock1	90x35-MGP10 H0 ADS	JD5	
LEW1	90x35-MGP10 H0 ADS	JD5	
TC1	90x35-MGP10 H0 ADS	JD5	300
W1	90x35-MGP10 H0 ADS	JD5	
W2	90x35-MGP10 H0 ADS	JD5	
W3	90x35-MGP10 H0 ADS	JD5	
W4	90x35-MGP10 H0 ADS	JD5	
W5	90x35-MGP10 H0 ADS	JD5	
W6	90x35-MGP10 H0 ADS	JD5	
W7	90x35-MGP10 H0 ADS	JD5	
W8	90x35-MGP10 H0 ADS	JD5	
W9	90x35-MGP10 H0 ADS	JD5	

- 7 more members were not shown -

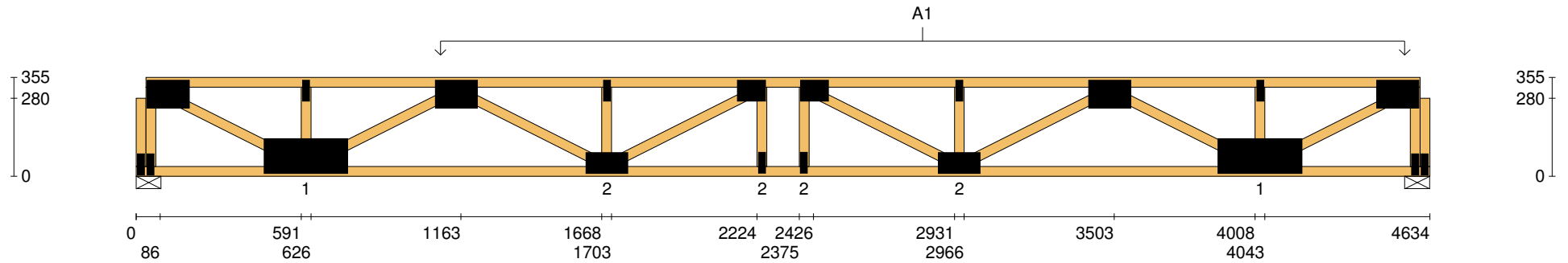
Vertical Reactions at Supports

	S1	S2
1.35DL (kN)	0.97	1.09
1.2DL + 1.5LL (kN)	3.92	4.02


Joint	Nail Plate	Joint	Nail Plate
BL1-1	25x75-MN	T7	25x75-MN
T1	100x150-MN	T8	100x150-MN
BL1	25x75-MN	B6	125x300-MN
B1	125x300-MN	T9	25x75-MN
T2	25x75-MN	BR1	25x75-MN
T3	100x150-MN	T10	100x150-MN
B2	75x150-MN	BR1-1	25x75-MN
T4	25x75-MN		
T5	75x100-MN		
B3	25x75-MN		
T6	75x100-MN		
B4	25x75-MN		
B5	75x150-MN		

Span: 4634	Floor Material: Particle (15.4 kg/m²)	Application: General Areas	All dimensions in millimetres. This drawing should be read in conjunction with Multinail Technical sheets. Wall plates must be placed at supports only.	Marc Houldsworth (TN-016-020)
Overhang: 0/0	Floor Covering: Std Carpet + Underlay (8 kg/m²)	Live Load: 1.5 kPa		Ver: Floor 1.9.3
Spacing: 600	Ceiling Material: Plaster 10mm Supa Span (8.2 kg/m²)	Point Load: 1.8 kN		Date: 28/05/2018
Quantity: 1	Ceiling Fixing: Metal direct @ 600c	Design: AS 1720.1-2010		Page: 12 of 24

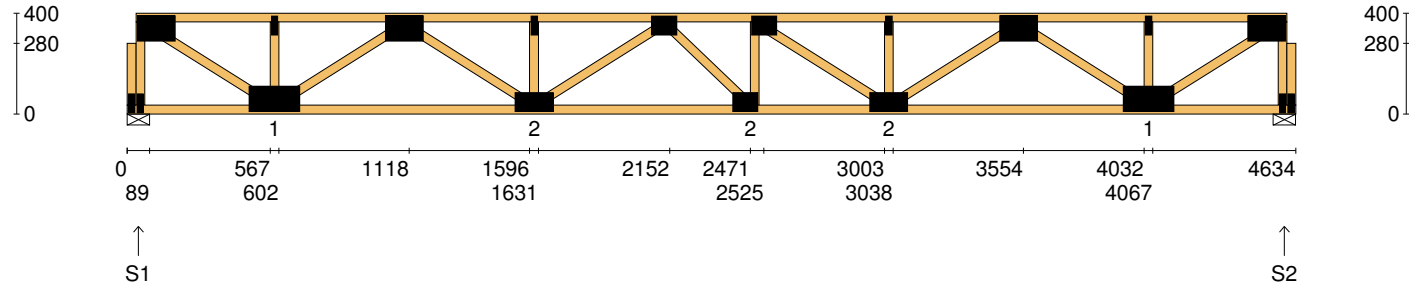
Client: D'ANDREA	Trusstech SA Pty Ltd 16 High St., Dry Creek, SA 5094	Job No: TT09731
Site: 541 ANZAC HWY GLENELG EAST SA 5045 AUS		Weight: 29.35 kg
Ref: DWELLING 5	Joist Name: FT8 Type: SJ 355 Joists: FT15	Total Weight: 29.35 kg
		Laminations: 1



User Def. Load	A1 43.50 kg/m ²
Applied Load	
DL (kN)	
LL (kN)	
WL Up (kN)	
WL Dn (kN)	

Span: 4634	Floor Material: Particle (15.4 kg/m²)	Application: General Areas	All dimensions in millimetres. This drawing should be read in conjunction with Multinail Technical sheets. Wall plates must be placed at supports only.	Marc Houldsworth (TN-016-020)
Overhang: 0/0	Floor Covering: Std Carpet + Underlay (8 kg/m²)	Live Load: 1.5 kPa		Ver: Floor 1.9.3
Spacing: 600	Ceiling Material: Plaster 10mm Supa Span (8.2 kg/m²)	Point Load: 1.8 kN		Date: 28/05/2018
Quantity: 1	Ceiling Fixing: Metal direct @ 600c	Design: AS 1720.1-2010		Page: 13 of 24

Client: D'ANDREA	Trusstech SA Pty Ltd 16 High St., Dry Creek, SA 5094	Job No: TT09731
Site: 541 ANZAC HWY GLENELG EAST SA 5045 AUS		Weight: 29.52 kg
Ref: DWELLING 5	Joist Name: FT9 Type: SJ 400 Joists: FT16	Total Weight: 29.52 kg
		Laminations: 1



TIMBER / PLATES


Member	Size	Plating	Restraint
BC1	90x35-MGP10 H0 ADS	JD5	600
LBlock1	90x35-MGP10 H0 ADS	JD5	
LEW1	90x35-MGP10 H0 ADS	JD5	
TC1	90x35-MGP10 H0 ADS	JD5	300
W1	90x35-MGP10 H0 ADS	JD5	
W2	90x35-MGP10 H0 ADS	JD5	
W3	90x35-MGP10 H0 ADS	JD5	
W4	90x35-MGP10 H0 ADS	JD5	
W5	90x35-MGP10 H0 ADS	JD5	
W6	90x35-MGP10 H0 ADS	JD5	
W7	90x35-MGP10 H0 ADS	JD5	
W8	90x35-MGP10 H0 ADS	JD5	
W9	90x35-MGP10 H0 ADS	JD5	

- 7 more members were not shown -

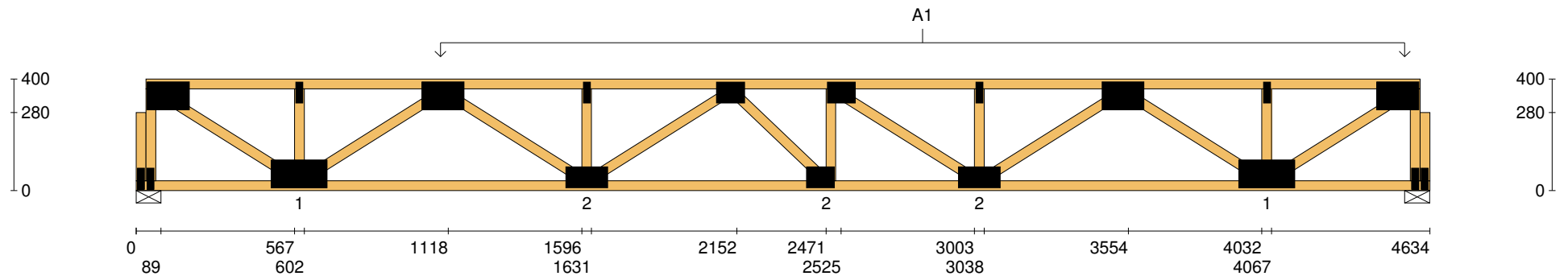
Vertical Reactions at Supports

	S1	S2
1.35DL (kN)	0.97	1.09
1.2DL + 1.5LL (kN)	3.92	4.03


Joint	Nail Plate	Joint	Nail Plate
BL1-1	25x75-MN	T8	100x150-MN
T1	100x150-MN	B5	100x200-MN
BL1	25x75-MN	T9	25x75-MN
B1	100x200-MN	BR1	25x75-MN
T2	25x75-MN	T10	100x150-MN
T3	100x150-MN	BR1-1	25x75-MN
B2	75x150-MN		
T4	25x75-MN		
T5	75x100-MN		
B3	75x100-MN		
T6	75x100-MN		
B4	75x150-MN		
T7	25x75-MN		

Span: 4634	Floor Material: Particle (15.4 kg/m²)	Application: General Areas	All dimensions in millimetres. This drawing should be read in conjunction with Multinail Technical sheets. Wall plates must be placed at supports only.	Marc Houldsworth (TN-016-020)	
Overhang: 0/0	Floor Covering: Std Carpet + Underlay (8 kg/m²)	Live Load: 1.5 kPa		Ver:	Floor 1.9.3
Spacing: 600	Ceiling Material: Plaster 10mm Supa Span (8.2 kg/m²)	Point Load: 1.8 kN		Date:	28/05/2018
Quantity: 1	Ceiling Fixing: Metal direct @ 600c	Design: AS 1720.1-2010		Page:	14 of 24

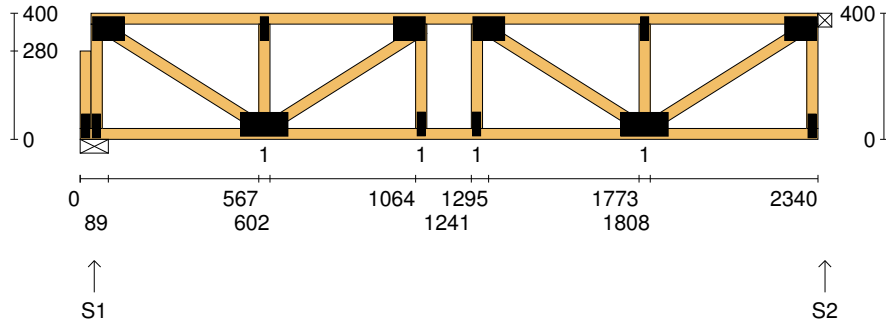
Client: D'ANDREA	Trusstech SA Pty Ltd 16 High St., Dry Creek, SA 5094	Job No: TT09731
Site: 541 ANZAC HWY GLENELG EAST SA 5045 AUS		Weight: 29.52 kg
Ref: DWELLING 5	Joist Name: FT9 Type: SJ 400 Joists: FT16	Total Weight: 29.52 kg
		Laminations: 1



User Def. Load	A1 43.50 kg/m ²
Applied Load	
DL (kN)	
LL (kN)	
WL Up (kN)	
WL Dn (kN)	

Span: 4634	Floor Material: Particle (15.4 kg/m²)	Application: General Areas	All dimensions in millimetres. This drawing should be read in conjunction with Multinail Technical sheets. Wall plates must be placed at supports only.	Marc Houldsworth (TN-016-020)
Overhang: 0/0	Floor Covering: Std Carpet + Underlay (8 kg/m²)	Live Load: 1.5 kPa		Ver: Floor 1.9.3
Spacing: 600	Ceiling Material: Plaster 10mm Supa Span (8.2 kg/m²)	Point Load: 1.8 kN		Date: 28/05/2018
Quantity: 1	Ceiling Fixing: Metal direct @ 600c	Design: AS 1720.1-2010		Page: 15 of 24

Client: D'ANDREA	Trusstech SA Pty Ltd 16 High St., Dry Creek, SA 5094	Job No: TT09731
Site: 541 ANZAC HWY GLENELG EAST SA 5045 AUS		Weight: 15.58 kg
Ref: DWELLING 5	Joist Name: FT10 Type: SJ 400 Joists: FT17, FT18, FT19, FT20	Total Weight: 62.31 kg
		Laminations: 1



TIMBER / PLATES


Member	Size	Plating	Restraint
BC1	90x35-MGP10 H0 ADS	JD5	600
LBlock1	90x35-MGP10 H0 ADS	JD5	
LEW1	90x35-MGP10 H0 ADS	JD5	
TC1	90x35-MGP10 H0 ADS	JD5	300
W1	90x35-MGP10 H0 ADS	JD5	
W2	90x35-MGP10 H0 ADS	JD5	
W3	90x35-MGP10 H0 ADS	JD5	
W4	90x35-MGP10 H0 ADS	JD5	
W5	90x35-MGP10 H0 ADS	JD5	
W6	90x35-MGP10 H0 ADS	JD5	
W7	90x35-MGP10 H0 ADS	JD5	
W8	90x35-MGP10 H0 ADS	JD5	
REW1	90x35-MGP10 H0 ADS	JD5	

Vertical Reactions at Supports

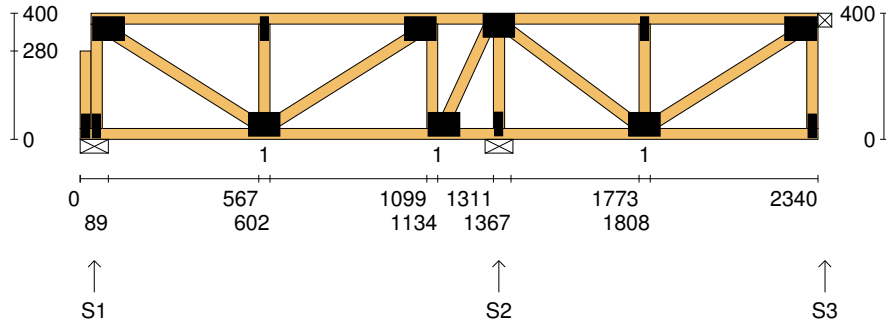
	S1	S2
1.35DL (kN)	0.39	0.38
1.2DL + 1.5LL (kN)	1.88	1.87

Joint Nail Plate

BL1-1	25x75-MN
T1	75x100-MN
BL1	25x75-MN
B1	75x150-MN
T2	25x75-MN
T3	75x100-MN
B2	25x75-MN
T4	75x100-MN
B3	25x75-MN
B4	75x150-MN
T5	25x75-MN
BR1	25x75-MN
T6	75x100-MN

Span: 2340	Floor Material: Particle (15.4 kg/m²)	Application: General Areas	All dimensions in millimetres. This drawing should be read in conjunction with Multinail Technical sheets. Wall plates must be placed at supports only.	Marc Houldsworth (TN-016-020)	
Overhang: 0/0	Floor Covering: Std Carpet + Underlay (8 kg/m²)	Live Load: 1.5 kPa		Ver:	Floor 1.9.3
Spacing: 600	Ceiling Material: Plaster 10mm Supa Span (8.2 kg/m²)	Point Load: 1.8 kN		Date:	28/05/2018
Quantity: 4	Ceiling Fixing: Metal direct @ 600c	Design: AS 1720.1-2010		Page:	16 of 24

Client: D'ANDREA	Trusstech SA Pty Ltd 16 High St., Dry Creek, SA 5094 Joist Name: FT11 Type: SJ 400 Joists: FT21	Job No: TT09731
Site: 541 ANZAC HWY GLENELG EAST SA 5045 AUS		Weight: 16.02 kg
Ref: DWELLING 5		Total Weight: 16.02 kg
		Laminations: 1



TIMBER / PLATES

Member	Size	Plating	Restraint
BC1	90x35-MGP10 H0 ADS	JD5	600
LBlock1	90x35-MGP10 H0 ADS	JD5	
LEW1	90x35-MGP10 H0 ADS	JD5	
TC1	90x35-MGP10 H0 ADS	JD5	300
W1	90x35-MGP10 H0 ADS	JD5	
W2	90x35-MGP10 H0 ADS	JD5	
W3	90x35-MGP10 H0 ADS	JD5	
W4	90x35-MGP10 H0 ADS	JD5	
W5	90x35-MGP10 H0 ADS	JD5	
W6	90x35-MGP10 H0 ADS	JD5	
W7	90x35-MGP10 H0 ADS	JD5	
W8	90x35-MGP10 H0 ADS	JD5	
W9	90x35-MGP10 H0 ADS	JD5	


- 1 more member was not shown -

Vertical Reactions at Supports

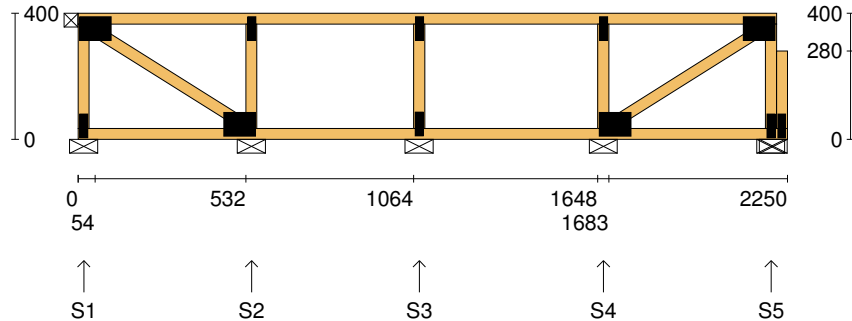
	S1	S2	S3
1.35DL (kN)	0.20	0.44	0.14
1.2DL + 1.5LL (kN)	0.95	2.12	0.68

Joint Nail Plate

BL1-1	25x75-MN
T1	75x100-MN
BL1	25x75-MN
B1	75x100-MN
T2	25x75-MN
T3	75x100-MN
B2	75x100-MN
T4	75x100-MN
B3	25x75-MN
B4	75x100-MN
T5	25x75-MN
BR1	25x75-MN
T6	75x100-MN

Span: 2340	Floor Material: Particle (15.4 kg/m²)	Application: General Areas	All dimensions in millimetres. This drawing should be read in conjunction with Multinail Technical sheets. Wall plates must be placed at supports only.	Marc Houldsworth (TN-016-020)	
Overhang: 0/0	Floor Covering: Std Carpet + Underlay (8 kg/m²)	Live Load: 1.5 kPa		Ver:	Floor 1.9.3
Spacing: 600	Ceiling Material: Plaster 10mm Supa Span (8.2 kg/m²)	Point Load: 1.8 kN		Date:	28/05/2018
Quantity: 1	Ceiling Fixing: Metal direct @ 600c	Design: AS 1720.1-2010		Page:	17 of 24

Client: D'ANDREA	Trusstech SA Pty Ltd 16 High St., Dry Creek, SA 5094	Job No: TT09731
Site: 541 ANZAC HWY GLENELG EAST SA 5045 AUS		Weight: 12.59 kg
Ref: DWELLING 5	Joist Name: FT12 Type: SJ 400 Ladder Joists: FT23	Total Weight: 12.59 kg
		Laminations: 1



TIMBER / PLATES


Member	Size	Plating	Restraint
BC1	90x35-MGP10 H0 ADS	JD5	600
LEW1	90x35-MGP10 H0 ADS	JD5	
TC1	90x35-MGP10 H0 ADS	JD5	300
W1	90x35-MGP10 H0 ADS	JD5	
W2	90x35-MGP10 H0 ADS	JD5	
W3	90x35-MGP10 H0 ADS	JD5	
W4	90x35-MGP10 H0 ADS	JD5	
W5	90x35-MGP10 H0 ADS	JD5	
REW1	90x35-MGP10 H0 ADS	JD5	
RBlock1	90x35-MGP10 H0 ADS	JD5	

Vertical Reactions at Supports

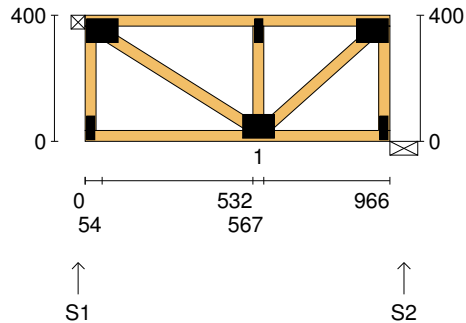
	S1	S2	S3	S4	S5
1.35DL (kN)	0.07	0.19	0.16	0.20	0.08
1.2DL + 1.5LL (kN)	0.33	1.00	0.86	1.06	0.33

Joint Nail Plate

T1	75x100-MN
BL1	25x75-MN
B1	75x100-MN
T2	25x75-MN
T3	25x75-MN
B2	25x75-MN
B3	75x100-MN
T4	25x75-MN
BR1	25x75-MN
T5	75x100-MN
BR1-1	25x75-MN

Span: 2250	Floor Material: Particle (15.4 kg/m²)	Application: General Areas	All dimensions in millimetres. This drawing should be read in conjunction with Multinail Technical sheets. Wall plates must be placed at supports only.	Marc Houldsworth (TN-016-020)	
Overhang: 0/0	Floor Covering: Std Carpet + Underlay (8 kg/m²)	Live Load: 1.5 kPa		Ver:	Floor 1.9.3
Spacing: 600	Ceiling Material: Plaster 10mm Supa Span (8.2 kg/m²)	Point Load: 1.8 kN		Date:	28/05/2018
Quantity: 1	Ceiling Fixing: Metal direct @ 600c	Design: AS 1720.1-2010		Page:	18 of 24

Client: D'ANDREA	Trusstech SA Pty Ltd 16 High St., Dry Creek, SA 5094 Joist Name: FT13 Type: SJ 400 Joists: FT24	Job No: TT09731
Site: 541 ANZAC HWY GLENELG EAST SA 5045 AUS		Weight: 6.73 kg
Ref: DWELLING 5		Total Weight: 6.73 kg Laminations: 1



TIMBER / PLATES


Member	Size	Plating	Restraint
BC1	90x35-MGP10 H0 ADS	JD5	600
LEW1	90x35-MGP10 H0 ADS	JD5	
TC1	90x35-MGP10 H0 ADS	JD5	300
W1	90x35-MGP10 H0 ADS	JD5	
W2	90x35-MGP10 H0 ADS	JD5	
W3	90x35-MGP10 H0 ADS	JD5	
REW1	90x35-MGP10 H0 ADS	JD5	

Vertical Reactions at Supports

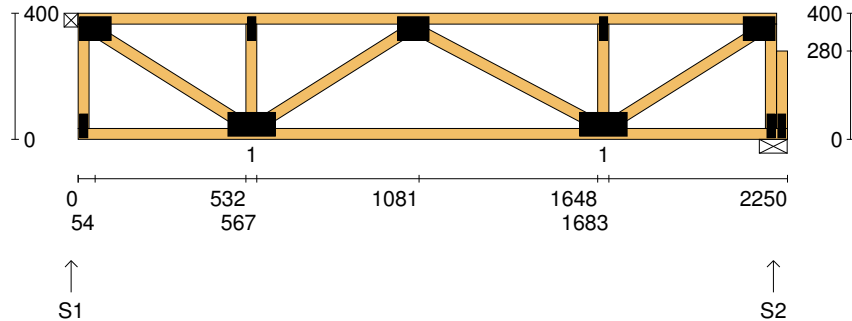
	S1	S2
1.35DL (kN)	0.16	0.16
1.2DL + 1.5LL (kN)	0.77	0.77

Joint Nail Plate

T1	75x100-MN
BL1	25x75-MN
B1	75x100-MN
T2	25x75-MN
BR1	25x75-MN
T3	75x100-MN

Span: 966	Floor Material: Particle (15.4 kg/m²)	Application: General Areas	All dimensions in millimetres. This drawing should be read in conjunction with Multinail Technical sheets. Wall plates must be placed at supports only.	Marc Houldsworth (TN-016-020)	
Overhang: 0/0	Floor Covering: Std Carpet + Underlay (8 kg/m²)	Live Load: 1.5 kPa		Ver: Floor 1.9.3	
Spacing: 600	Ceiling Material: Plaster 10mm Supa Span (8.2 kg/m²)	Point Load: 1.8 kN		Date: 28/05/2018	
Quantity: 1	Ceiling Fixing: Metal direct @ 600c	Design: AS 1720.1-2010		Page: 19 of 24	

Client: D'ANDREA	Trusstech SA Pty Ltd 16 High St., Dry Creek, SA 5094 Joist Name: FT14 Type: SJ 400 Joists: FT25, FT26, FT27, FT28, FT29	Job No: TT09731
Site: 541 ANZAC HWY GLENELG EAST SA 5045 AUS		Weight: 14.17 kg
Ref: DWELLING 5		Total Weight: 70.83 kg Laminations: 1



TIMBER / PLATES


Member	Size	Plating	Restraint
BC1	90x35-MGP10 H0 ADS	JD5	600
LEW1	90x35-MGP10 H0 ADS	JD5	
TC1	90x35-MGP10 H0 ADS	JD5	300
W1	90x35-MGP10 H0 ADS	JD5	
W2	90x35-MGP10 H0 ADS	JD5	
W3	90x35-MGP10 H0 ADS	JD5	
W4	90x35-MGP10 H0 ADS	JD5	
W5	90x35-MGP10 H0 ADS	JD5	
W6	90x35-MGP10 H0 ADS	JD5	
REW1	90x35-MGP10 H0 ADS	JD5	
RBlock1	90x35-MGP10 H0 ADS	JD5	

Vertical Reactions at Supports

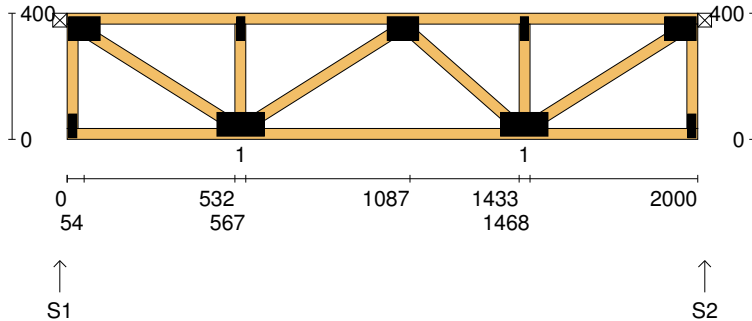
	S1	S2
1.35DL (kN)	0.36	0.37
1.2DL + 1.5LL (kN)	1.79	1.80

Joint Nail Plate

T1	75x100-MN
BL1	25x75-MN
B1	75x150-MN
T2	25x75-MN
T3	75x100-MN
B2	75x150-MN
T4	25x75-MN
BR1	25x75-MN
T5	75x100-MN
BR1-1	25x75-MN

Span: 2250	Floor Material: Particle (15.4 kg/m²)	Application: General Areas	All dimensions in millimetres. This drawing should be read in conjunction with Multinail Technical sheets. Wall plates must be placed at supports only.	Marc Houldsworth (TN-016-020)	
Overhang: 0/0	Floor Covering: Std Carpet + Underlay (8 kg/m²)	Live Load: 1.5 kPa		Ver:	Floor 1.9.3
Spacing: 600	Ceiling Material: Plaster 10mm Supa Span (8.2 kg/m²)	Point Load: 1.8 kN		Date:	28/05/2018
Quantity: 5	Ceiling Fixing: Metal direct @ 600c	Design: AS 1720.1-2010		Page:	20 of 24

Client: D'ANDREA	Trusstech SA Pty Ltd 16 High St., Dry Creek, SA 5094 Joist Name: FT15 Type: SJ 400 Joists: FT30	Job No: TT09731
Site: 541 ANZAC HWY GLENELG EAST SA 5045 AUS		Weight: 12.73 kg
Ref: DWELLING 5		Total Weight: 12.73 kg Laminations: 1



TIMBER / PLATES


Member	Size	Plating	Restraint
BC1	90x35-MGP10 H0 ADS	JD5	600
LEW1	90x35-MGP10 H0 ADS	JD5	
TC1	90x35-MGP10 H0 ADS	JD5	300
W1	90x35-MGP10 H0 ADS	JD5	
W2	90x35-MGP10 H0 ADS	JD5	
W3	90x35-MGP10 H0 ADS	JD5	
W4	90x35-MGP10 H0 ADS	JD5	
W5	90x35-MGP10 H0 ADS	JD5	
W6	90x35-MGP10 H0 ADS	JD5	
REW1	90x35-MGP10 H0 ADS	JD5	

Vertical Reactions at Supports

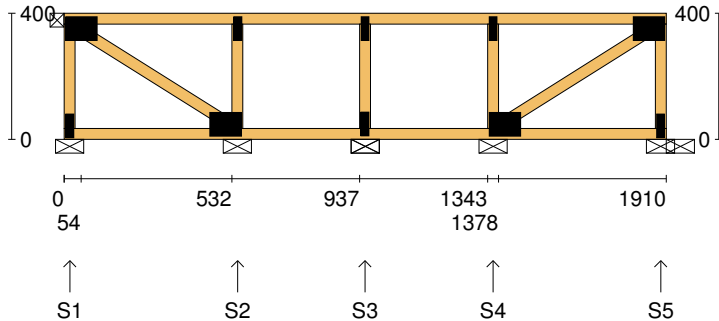
	S1	S2
1.35DL (kN)	0.33	0.33
1.2DL + 1.5LL (kN)	1.62	1.62

Joint Nail Plate

T1	75x100-MN
BL1	25x75-MN
B1	75x150-MN
T2	25x75-MN
T3	75x100-MN
B2	75x150-MN
T4	25x75-MN
BR1	25x75-MN
T5	75x100-MN

Span: 2000	Floor Material: Particle (15.4 kg/m²)	Application: General Areas	All dimensions in millimetres. This drawing should be read in conjunction with Multinail Technical sheets. Wall plates must be placed at supports only.	Marc Houldsworth (TN-016-020)	
Overhang: 0/0	Floor Covering: Std Carpet + Underlay (8 kg/m²)	Live Load: 1.5 kPa		Ver:	Floor 1.9.3
Spacing: 600	Ceiling Material: Plaster 10mm Supa Span (8.2 kg/m²)	Point Load: 1.8 kN		Date:	28/05/2018
Quantity: 1	Ceiling Fixing: Metal direct @ 600c	Design: AS 1720.1-2010		Page:	21 of 24

Client: D'ANDREA	Trusstech SA Pty Ltd 16 High St., Dry Creek, SA 5094 Joist Name: FT16 Type: SJ 400 Ladder Joists: FT33	Job No: TT09731
Site: 541 ANZAC HWY GLENELG EAST SA 5045 AUS		Weight: 11.16 kg
Ref: DWELLING 5		Total Weight: 11.16 kg Laminations: 1



TIMBER / PLATES


Member	Size	Plating	Restraint
BC1	90x35-MGP10 H0 ADS	JD5	600
LEW1	90x35-MGP10 H0 ADS	JD5	
TC1	90x35-MGP10 H0 ADS	JD5	300
W1	90x35-MGP10 H0 ADS	JD5	
W2	90x35-MGP10 H0 ADS	JD5	
W3	90x35-MGP10 H0 ADS	JD5	
W4	90x35-MGP10 H0 ADS	JD5	
W5	90x35-MGP10 H0 ADS	JD5	
REW1	90x35-MGP10 H0 ADS	JD5	

Vertical Reactions at Supports

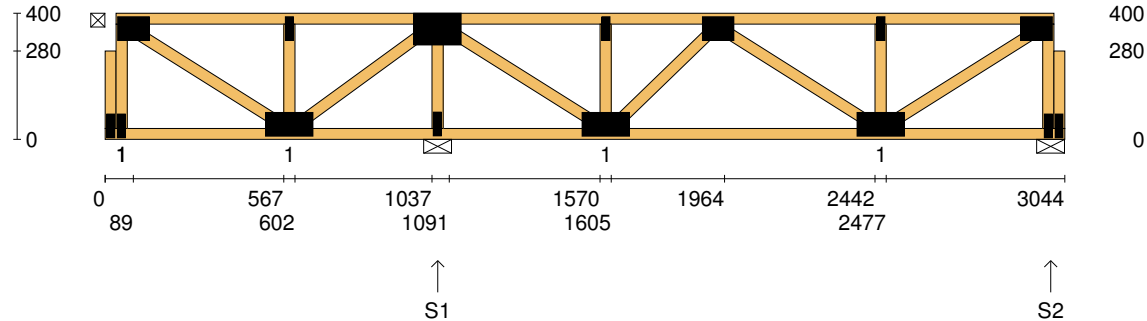
	S1	S2	S3	S4	S5
1.35DL (kN)	0.07	0.19	0.10	0.19	0.07
1.2DL + 1.5LL (kN)	0.34	0.95	0.50	0.96	0.34

Joint Nail Plate

T1	75x100-MN
BL1	25x75-MN
B1	75x100-MN
T2	25x75-MN
T3	25x75-MN
B2	25x75-MN
B3	75x100-MN
T4	25x75-MN
BR1	25x75-MN
T5	75x100-MN

Span: 1910	Floor Material: Particle (15.4 kg/m²)	Application: General Areas	All dimensions in millimetres. This drawing should be read in conjunction with Multinail Technical sheets. Wall plates must be placed at supports only.	Marc Houldsworth (TN-016-020)	
Overhang: 0/0	Floor Covering: Std Carpet + Underlay (8 kg/m²)	Live Load: 1.5 kPa		Ver: Floor 1.9.3	
Spacing: 600	Ceiling Material: Plaster 10mm Supa Span (8.2 kg/m²)	Point Load: 1.8 kN		Date: 28/05/2018	
Quantity: 1	Ceiling Fixing: Metal direct @ 600c	Design: AS 1720.1-2010		Page: 22 of 24	

Client: D'ANDREA	Trusstech SA Pty Ltd 16 High St., Dry Creek, SA 5094 Joist Name: FT17 Type: SJ 400 Joists: FT34	Job No: TT09731
Site: 541 ANZAC HWY GLENELG EAST SA 5045 AUS		Weight: 19.98 kg
Ref: DWELLING 5		Total Weight: 19.98 kg
		Laminations: 1



TIMBER / PLATES


Member	Size	Plating	Restraint
BC1	90x35-MGP10 H0 ADS	JD5	600
LBlock1	90x35-MGP10 H0 ADS	JD5	
LEW1	90x35-MGP10 H0 ADS	JD5	
TC1	90x35-MGP10 H0 ADS	JD5	300
W1	90x35-MGP10 H0 ADS	JD5	
W2	90x35-MGP10 H0 ADS	JD5	
W3	90x35-MGP10 H0 ADS	JD5	
W4	90x35-MGP10 H0 ADS	JD5	
W5	90x35-MGP10 H0 ADS	JD5	
W6	90x35-MGP10 H0 ADS	JD5	
W7	90x35-MGP10 H0 ADS	JD5	
W8	90x35-MGP10 H0 ADS	JD5	
W9	90x35-MGP10 H0 ADS	JD5	

- 3 more members were not shown -

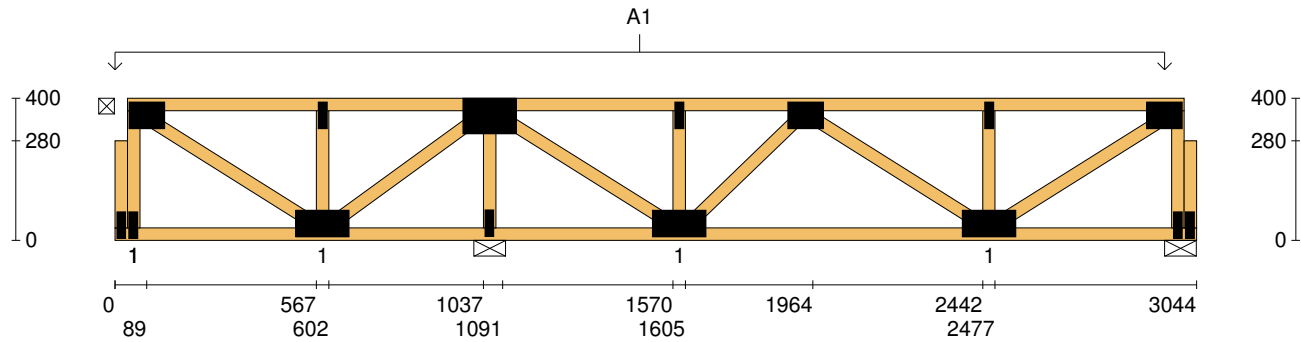
Vertical Reactions at Supports

	S1	S2
1.35DL (kN)	1.11	0.35
1.2DL + 1.5LL (kN)	4.00	1.27


Joint	Nail Plate	Joint	Nail Plate
BL1-1	25x75-MN	T7	75x100-MN
T1	75x100-MN	BR1-1	25x75-MN
BL1	25x75-MN		
B1	75x150-MN		
T2	25x75-MN		
T3	100x150-MN		
B2	25x75-MN		
B3	75x150-MN		
T4	25x75-MN		
T5	75x100-MN		
B4	75x150-MN		
T6	25x75-MN		
BR1	25x75-MN		

Span: 3044	Floor Material: Particle (15.4 kg/m²)	Application: General Areas	All dimensions in millimetres. This drawing should be read in conjunction with Multinail Technical sheets. Wall plates must be placed at supports only.	Marc Houldsworth (TN-016-020)	
Overhang: 0/0	Floor Covering: Std Carpet + Underlay (8 kg/m²)	Live Load: 1.5 kPa		Ver:	Floor 1.9.3
Spacing: 600	Ceiling Material: Plaster 10mm Supa Span (8.2 kg/m²)	Point Load: 1.8 kN		Date:	28/05/2018
Quantity: 1	Ceiling Fixing: Metal direct @ 600c	Design: AS 1720.1-2010		Page:	23 of 24

Client: D'ANDREA	Trusstech SA Pty Ltd 16 High St., Dry Creek, SA 5094	Job No: TT09731
Site: 541 ANZAC HWY GLENELG EAST SA 5045 AUS		Weight: 19.98 kg
Ref: DWELLING 5	Joist Name: FT17 Type: SJ 400 Joists: FT34	Total Weight: 19.98 kg
		Laminations: 1



User Def. Load	A1 43.50 kg/m ²
Applied Load	
DL (kN)	
LL (kN)	
WL Up (kN)	
WL Dn (kN)	

Span: 3044	Floor Material: Particle (15.4 kg/m²)	Application: General Areas	All dimensions in millimetres. This drawing should be read in conjunction with Multinail Technical sheets. Wall plates must be placed at supports only.	Marc Houldsworth (TN-016-020)
Overhang: 0/0	Floor Covering: Std Carpet + Underlay (8 kg/m²)	Live Load: 1.5 kPa		Ver: Floor 1.9.3
Spacing: 600	Ceiling Material: Plaster 10mm Supa Span (8.2 kg/m²)	Point Load: 1.8 kN		Date: 28/05/2018
Quantity: 1	Ceiling Fixing: Metal direct @ 600c	Design: AS 1720.1-2010		Page: 24 of 24